

NOCCELA

Beacon 3



Description

Locate your Noccoela compatible devices with high accuracy and low latency. Noccoela Beacon 3 is a compact and easy to install cloud-managed indoor positioning beacon. Its compact and light design allows it to be installed almost anywhere. It has been engineered to be highly reliable and secure.

Features

- Up to centimeter-accuracy
- Unlimited tag capacity. Active tag capacity of 896 when positioning frequency is 1 Hz. Tags become inactive when not moving
- Compact design — light and small enough to install almost anywhere
- Easy to install
- Power of Ethernet (PoE) for easy cabling — security camera styled installation
- Large area coverage, typically 50-250 m² (538-2690 ft²) per beacon
- Secure and reliable
- Factory colors are black and white — custom colors available

Technical Specifications

| | |
|--------------------------|---|
| Dimensions | Radius 75 mm (~2.95 in), height 70mm (~ 2.76 in) |
| Environment | Indoor, operating temperature 0 °C ~ 50 °C (32 °F ~ 122 °F) |
| Weight | 190 g (~0.42 lb) |
| Mounting | With a mounting bracket or a threaded bar (M10) |
| Power Consumption | ~3 W |
| Radio | UWB |
| Antenna Type | Internal |
| Interface | A 10/100 Mbps LAN Port with PoE capability |
| Certifications | CE, FCC, & ISSED (pending) |

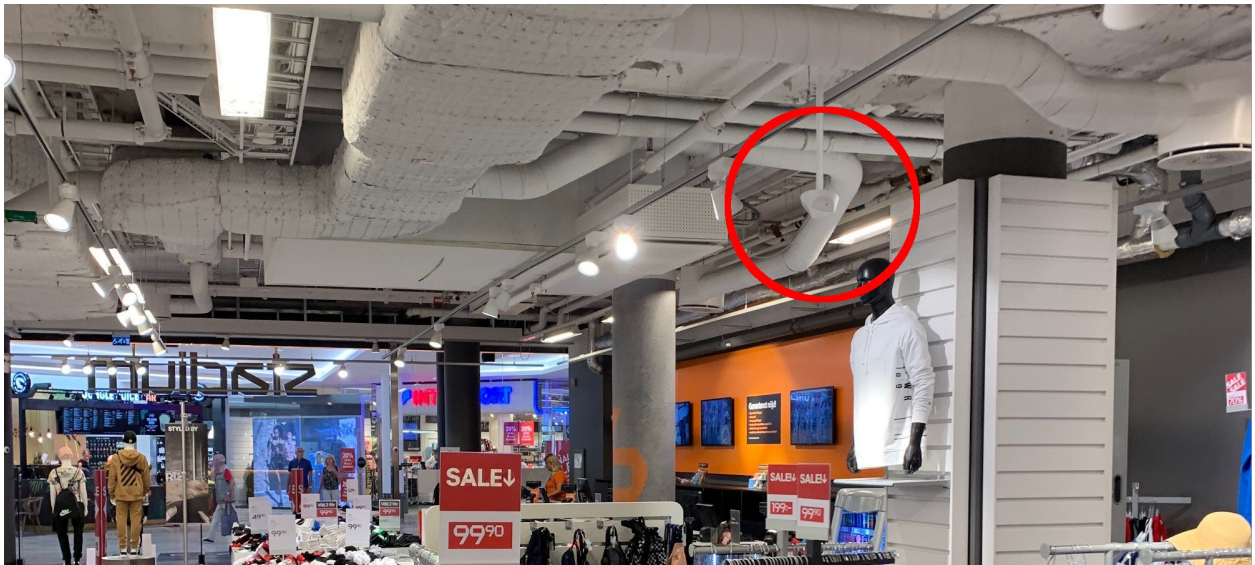
NOCCELA

Beacon 3

Typical Installations Illustrated



Small spaces with stylish ceiling — "smoke detector styled installation"



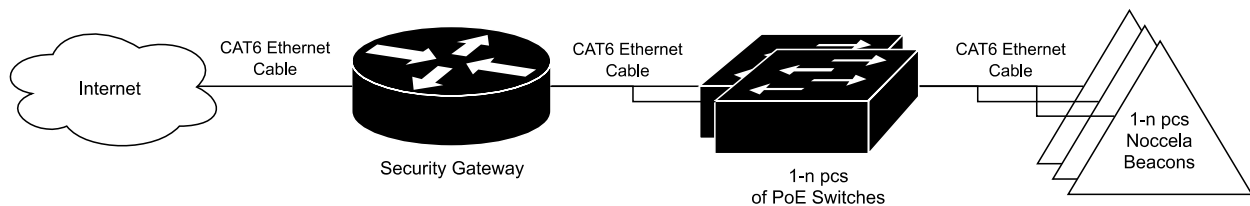
Large spaces with large area coverage

Optimal installation solution is designed as a turn key solution for you by Noccela specialist team.

NOCCELA

Beacon 3

Network Description



Noccela system doesn't require a public IP, a static IP or access to the customer's private network

Security gateway is by default installed to the server rack. The security gateway is then connected to the internet. It requires outgoing access to TCP ports 443 and 6667 and UDP ports 123 and 1317.

One or multiple PoE switches are used to connect the Noccela Beacons to the security gateway. Required amount and size of switches depend on the number of Noccela Beacons. Each Noccela Beacon takes one port from a switch. Up to 4 switches can be attached directly to the security gateway recommended by Noccela. Alternatively, the switches can be chained to each other. Usually a single 24-port switch is used. The switches are typically installed to the ceiling to reduce the need of cabling. Alternatively, the switches can be installed to the server rack.

